

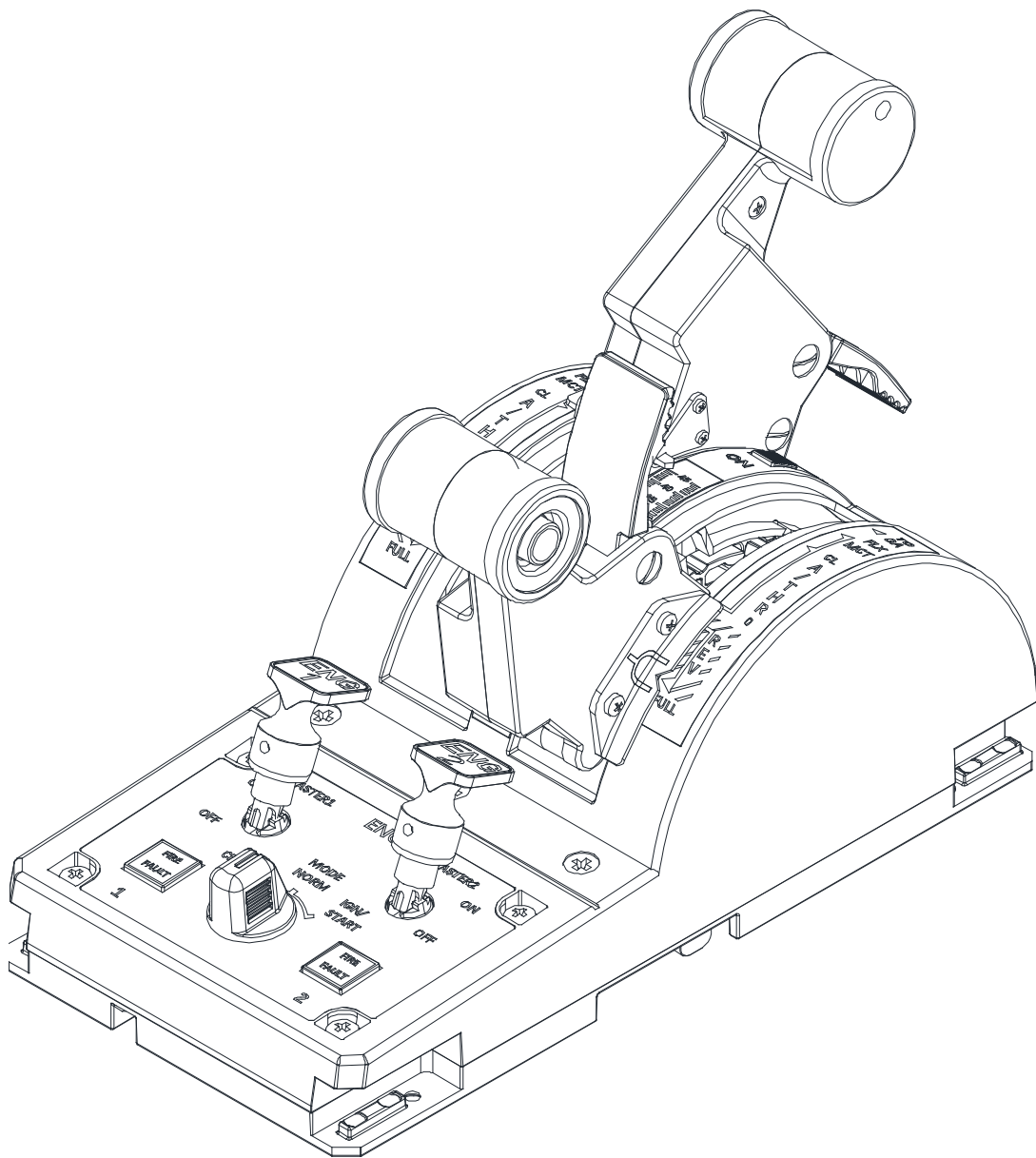
WINWING SIM

WINWING URSA MINOR 32 Throttle Metal 1.0

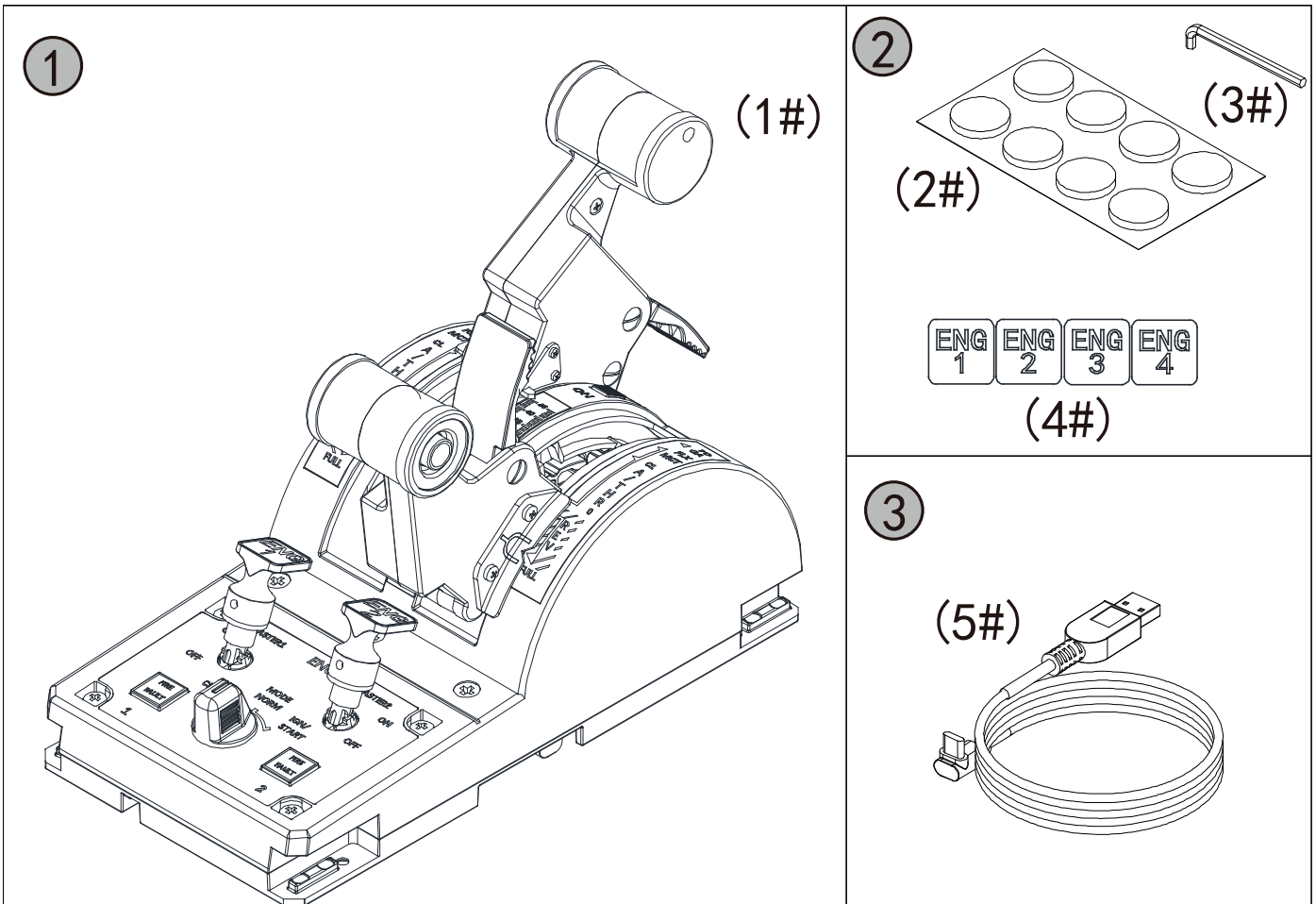
Model: U.32.T.MET.1

User Manual

V1.0 2025.08.26



Packing List



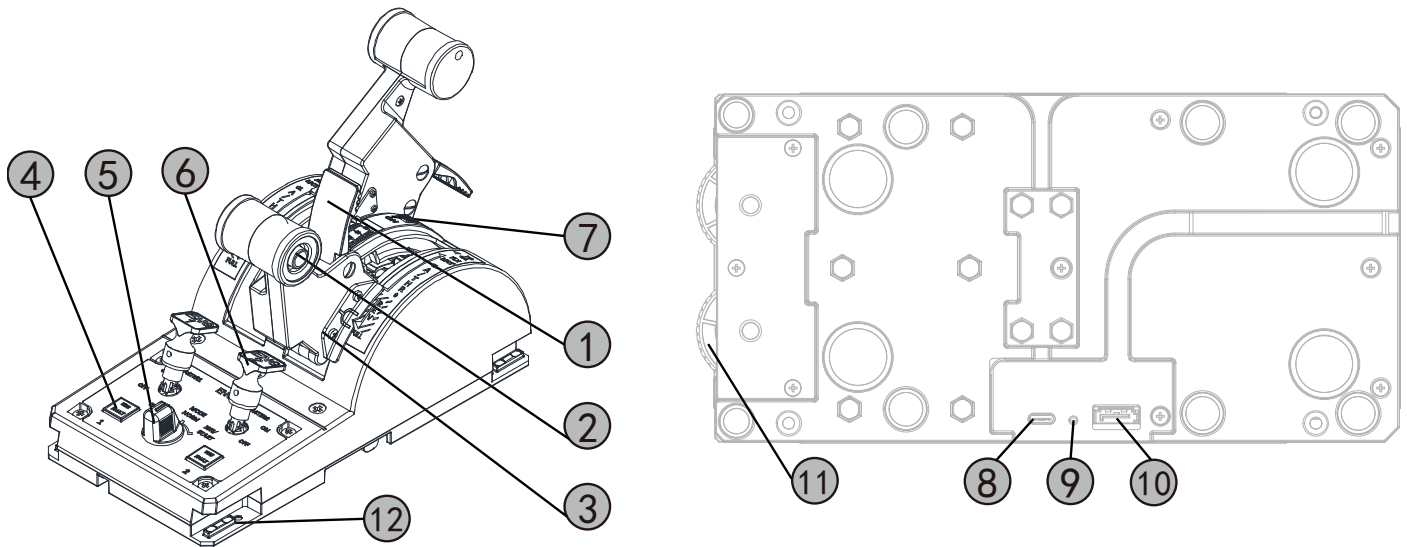
- ① U.32.T.MET.1 (1#) ; 1
- ② Accessory kit(2#、3#、4#)..... 1
 - 2#:Nano double-sided tape
 - 3#:Hex socket tool
 - 4#:ENG label
- ③ Data cable (5#) 。 1

Catalog

1 Product Introduction	1
1.1 Components Introduction	1
1.2 Performance Parameters	2
1.3 External Dimensions	3
1.4 Assembling Dimensions	4
1.5 Compatible Model	4
2 For First use	4
2.1 Software Installation	4
2.2 Components and Accessories Assembling	5
2.3 How to Use	5
3 Functions	7
3.1 Mechanical, Special Functions	7
3.2 Key Positions	8
3.3 Data Interface	8
3.4 Adjustment Methods	9
3.5 Parallel Use	10
4 Assembling Method	11
4.1 Use by Placing Directly	11
4.2 Adhesive Mounting	11
4.3 Mount Assembling need purchase separately	12
4.4 Profile Assembling Profiles and related accessories need to be prepared by yourself	14
5 Maintenance and Upkeep	16
5.1 Firmware Upgrade	16
5.2 Cleaning and Maintenance	16
5.3 FAQs and After-sales	17
6 Safety Precautions	18
Disclaimer	20

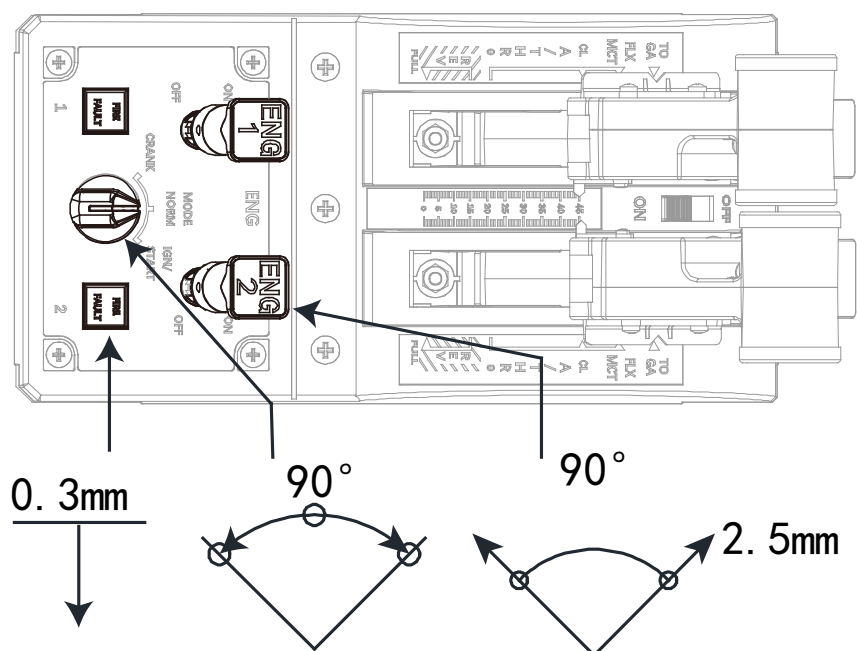
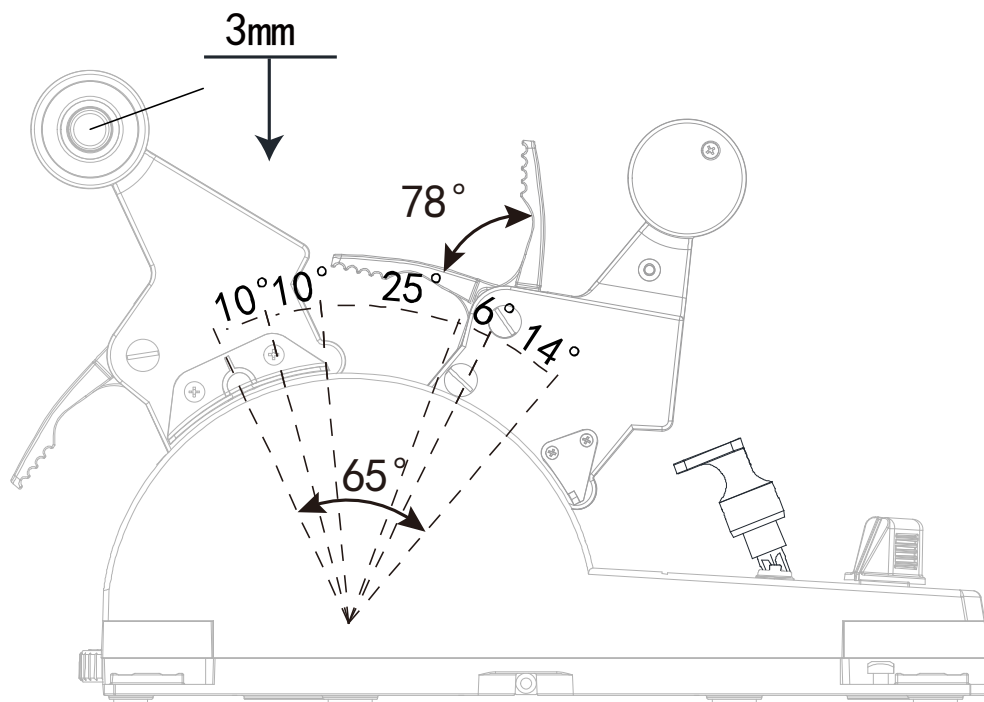
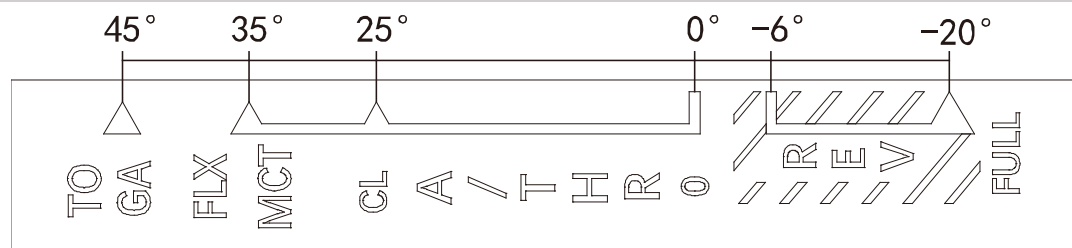
1 Product Introduction

1.1 Components Introduction



- | | | |
|-------------------------|----------------------------------|------------------------------|
| ① Trigger | ⑦ Scale cancellation key | ⑪ Resistance adjustment knob |
| ② Grip button | ⑧ Type C communication interface | ⑫ Reserved mounting port |
| ③ Throttle axis | ⑨ Status of indicator light | |
| ④ Button | ⑩ Communication interface | |
| ⑤ Three-position switch | | |
| ⑥ Two-position switch | | |

1.2 Performance Parameters



1.2.1 Trigger limited extent 78°; * Note: The trigger is made of plastic and is prone to breakage under violent impact and heavy load (operating force must not exceed 40N).

1.2.2 Main axis limited extent 65°

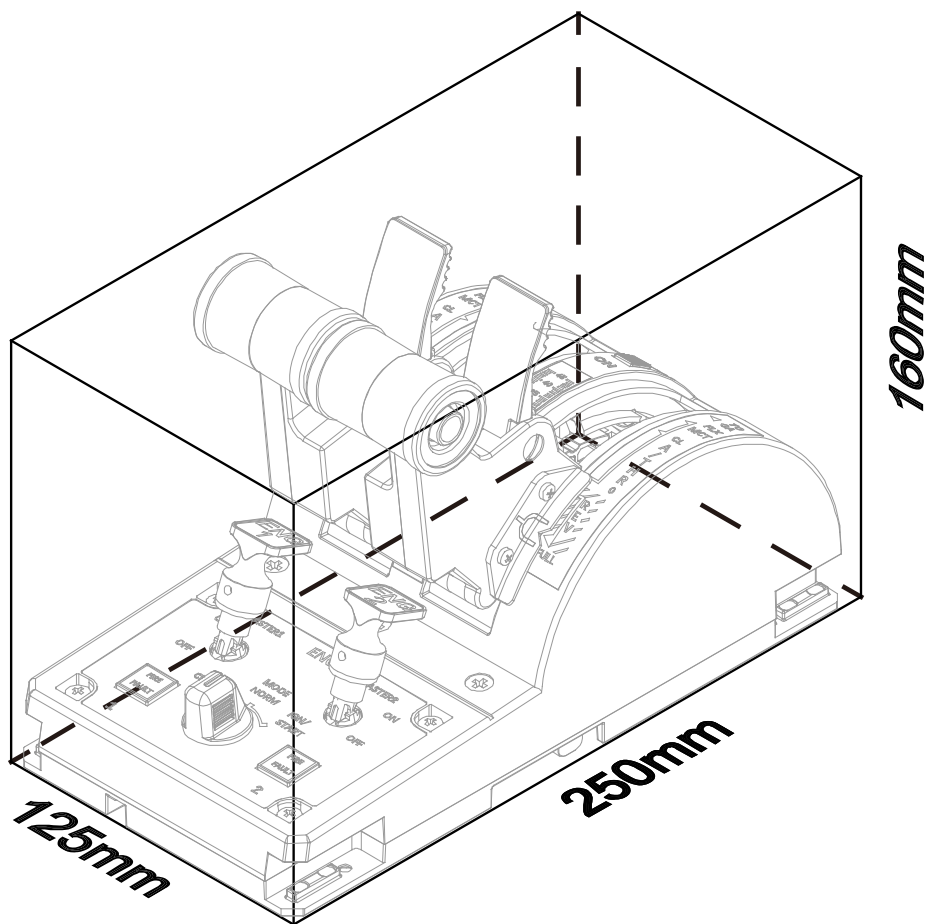
1.2.3 Grip button travel 3mm;

1.2.4 Buttons press limited extent 0.3mm

1.2.5 The three-position switch rotation range 90°

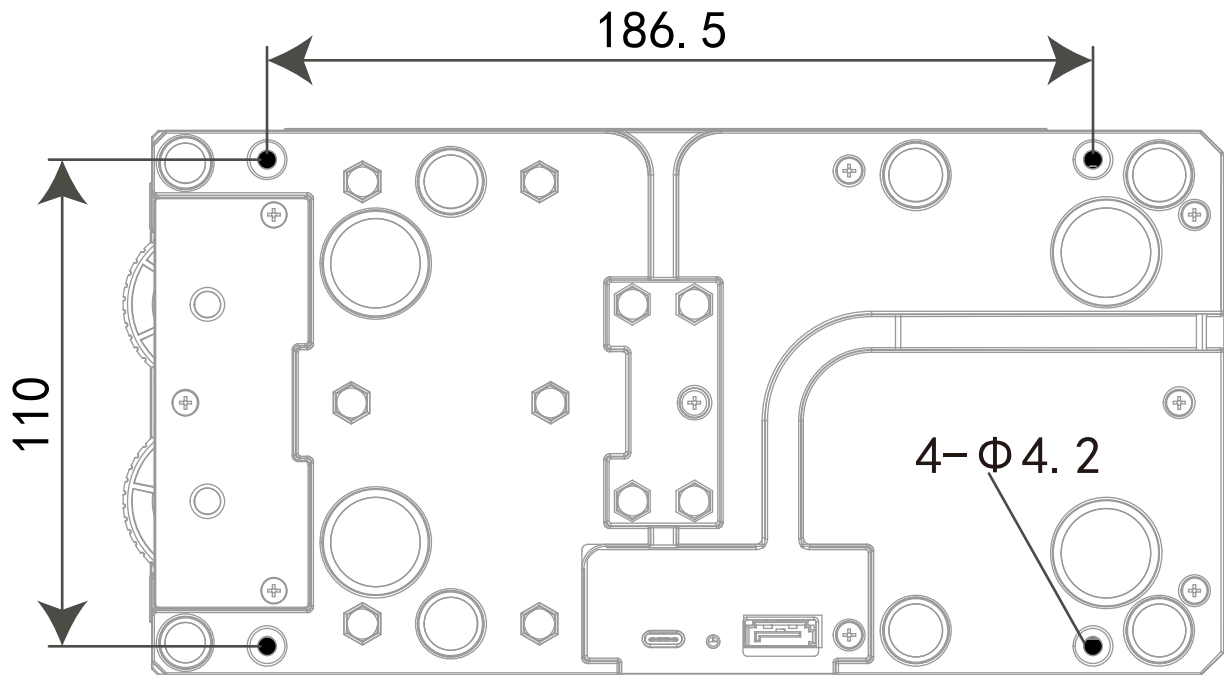
1.2.6 The two-position switch lift limited extent 2.5mm and rotation range 30°

1.3 External Dimensions



- L x W x H: 250mm*125mm*160mm; Weight: 1.3kg(1.1lb).

1.4 Assembling Dimensions



- The spacing of the assembling holes 4- \varnothing 4.2 is 186.5mm*110mm.

1.5 Compatible Model

- Supports independent use
- Support for assembly with multiple control panels (refer to subsequent available products)
- Use with the MT.N.N.5.1 bracket
- Support for mounting on 2020 profiles (profiles and related accessories not included)

2 For First use

2.1 Software Installation

- Download SimAppPro

Download at:

<https://cn.winwingsim.com/view/simappro.html> China downloading website

<https://winwingsim.com/view/simappro.html> Oversea downloading website

- Install SimAppPro

Run the program after installing as prompted by the software.

The product is customizable in SimAppPro. (Refer to the SimAppPro User Manual for more details)

- When using the product, you need to run SimAppPro before launching the game (the product will automatically adapt to supported games and models, plug and play. Refer to the SimAppPro User Manual for more details)

The download link for the SimAppPro user manual

<https://cn.winwingsim.com/view/regular.html#manual-130> user manual in Chinese

<https://winwingsim.com/view/regular.html#manual-132> user manual in English

2.2 Components and Accessories Assembling

- Assemble the bracket in the right position according to your own needs for use. (Refer to 4 Assembling methods)
- Assembling on profiles for use (See Assembling Method 4)

2.3 How to Use

- Device Connection

The product connects to the computer via its own data cable. (Interface details refer to

3.3 Data Interfaces)

How to Connect

Insert the included (5#) data cable into the product's USB data interface and connect to your computer. For products that require assembly of components, except for the USB interface, other interfaces do not support hot plugging. Please connect the product before connecting to the computer.

(Note: 1. If you need to connect other interfaces such as PS2, SATA, or air cable, please unplug the USB cable before operation; 2. Make sure data cable 5# is connected to the product before fixing. It is not convenient to plug and unplug after fixing.)

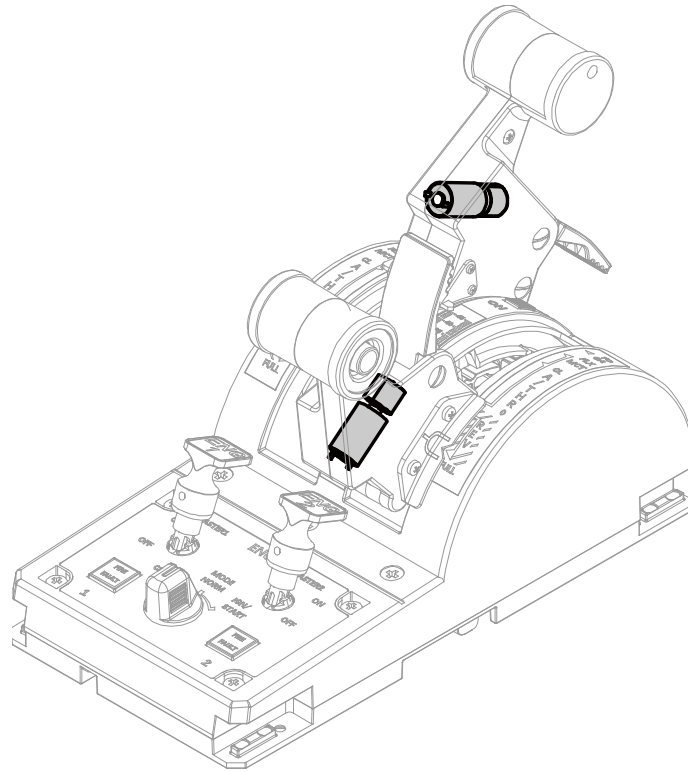
- Attach the ENG label

4 pieces of ENG label 4# are included with the product and can be attached according to your own needs. When used alone, apply ENG1,ENG2; When used in parallel, the other one is attached to ENG3,ENG4.

Note that the base plate of the product is made of die-cast aluminium. Please avoid using it in damp or water-stained environments, otherwise the base plate may rust and mold.

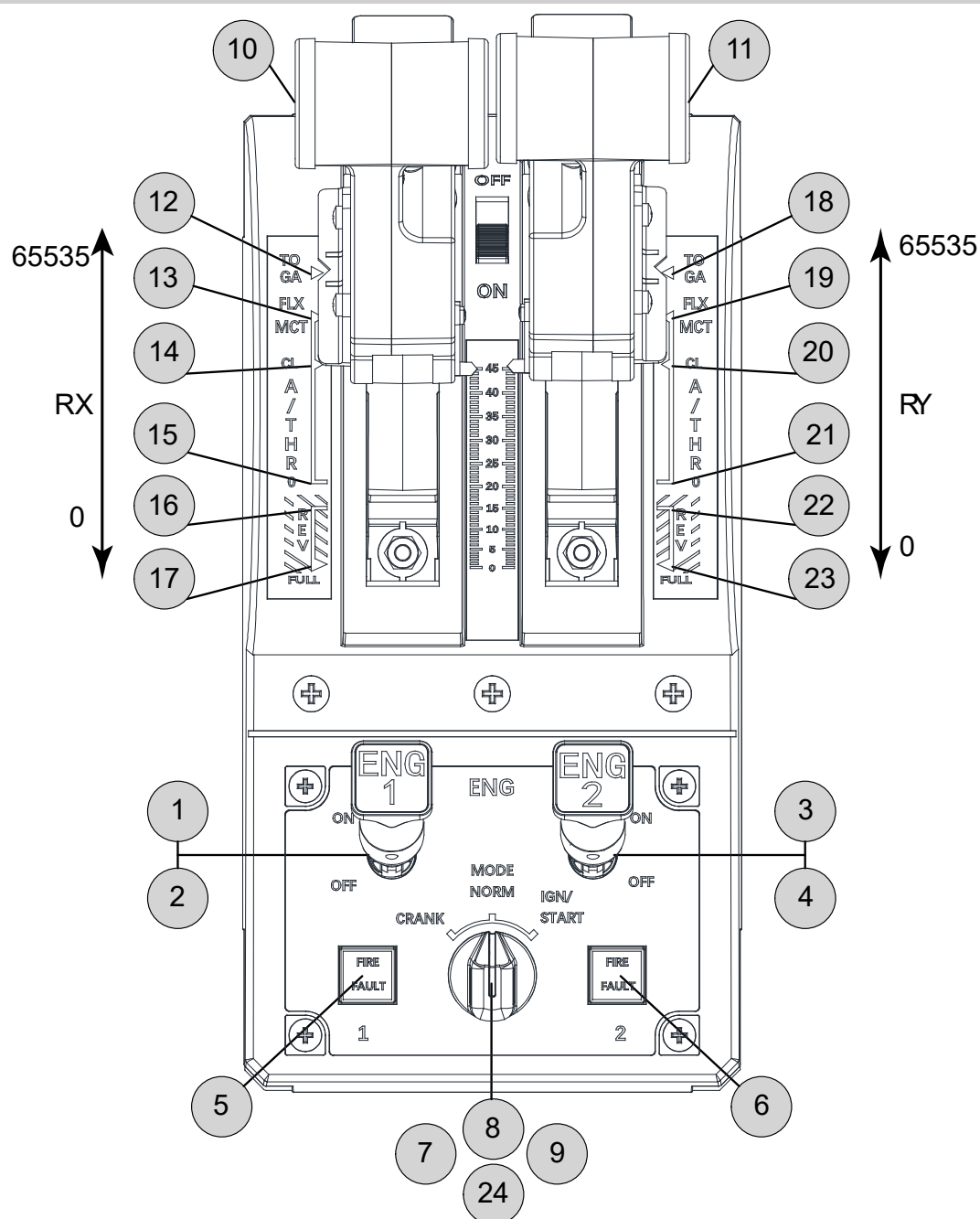
3 Functions

3.1 Mechanical, Special Functions



- Vibration feedback: Vibration feedback is available during operation

3.2 Key Positions



- LED status display:

Green continuous slow flash (1 second interval) -- BOOT mode

Green slow flash (1 second interval) 5 times followed by constant light -- Working mode

Green slow flash (1 second interval) 5 times followed by light off -- Power only mode.

3.3 Data Interface

- USB Data Port(TYPE-C)

For communication and power supply between the product and the computer, the product can be used by connecting this cable

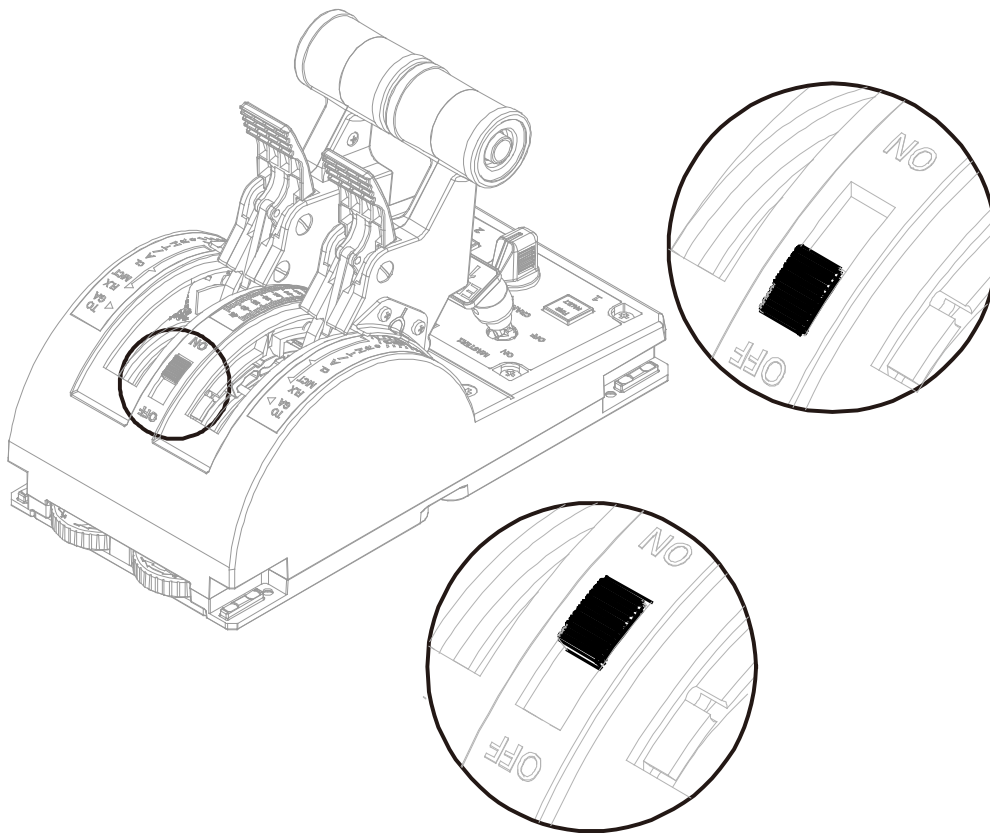
HID Communication protocol: HID

- SATA Port

For connection with 32.PAC.Met.1.0 products.

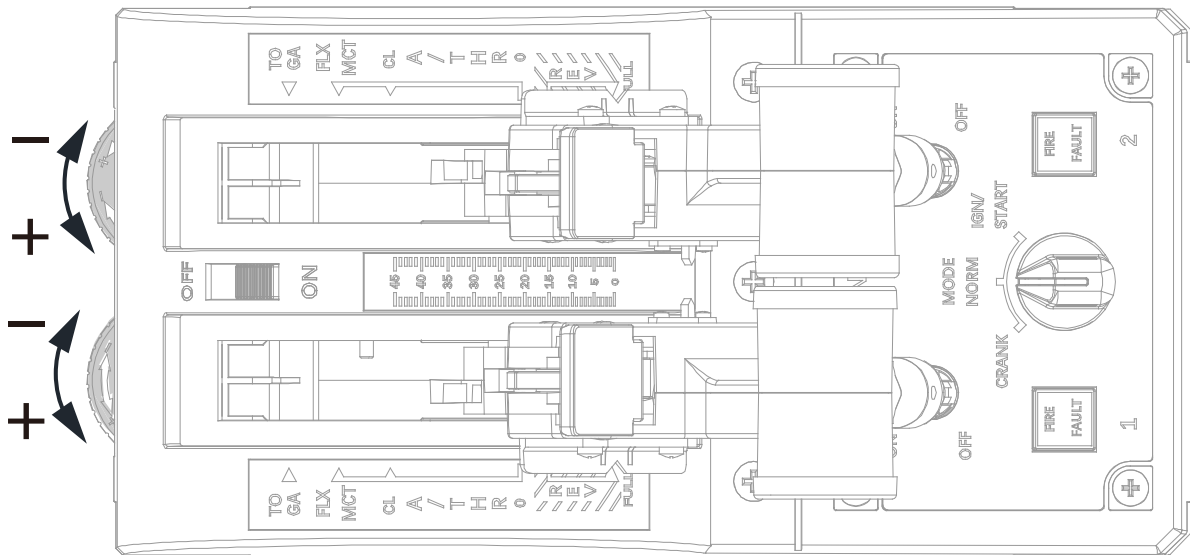
3.4 Adjustment Methods

3.4.1 Scale cancellation function



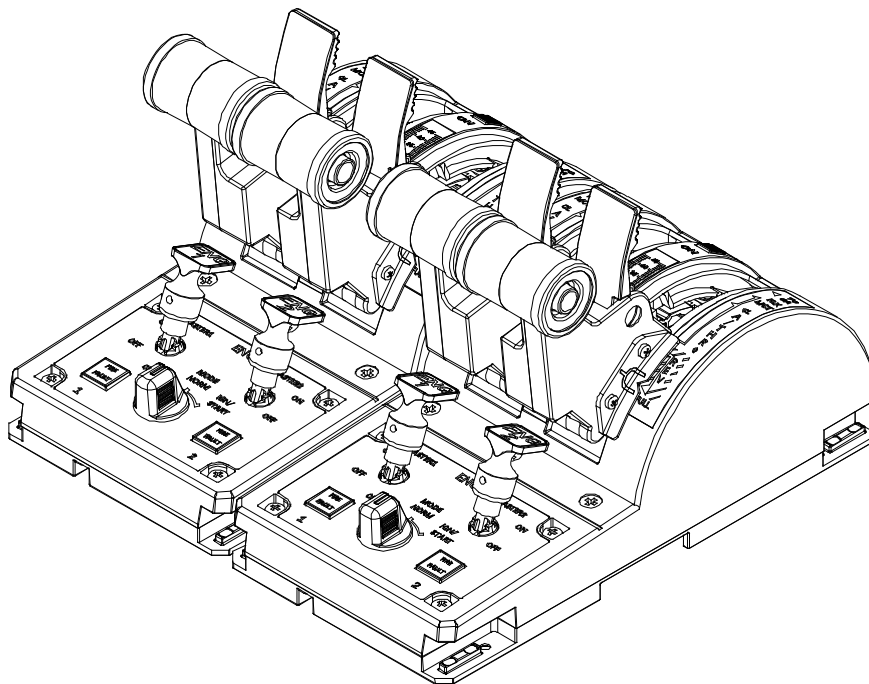
- There is notch feelings while you are pushing the throttle shaft when it is ON position. When set to ON, the throttle axis has tactile detents (detent mode);
- When set to OFF, the throttle axis moves freely without detents (no detent mode, smooth travel from IDLE to TO/GA).

3.4.2 Resistance adjustment function



- Counterclockwise rotation of the roller increases throttle shaft resistance, clockwise rotation reduces throttle shaft resistance.

3.5 Parallel Use

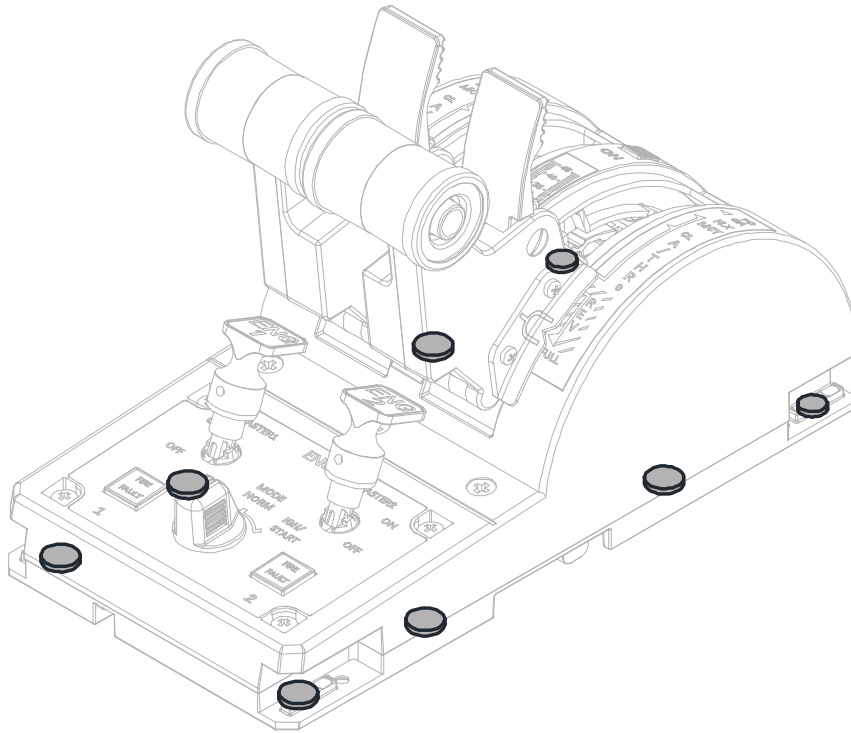


- Plug the data cable 5# into two devices separately to connect to the computer.

Note: Two devices need to be purchased for parallel use.

4 Assembling Method

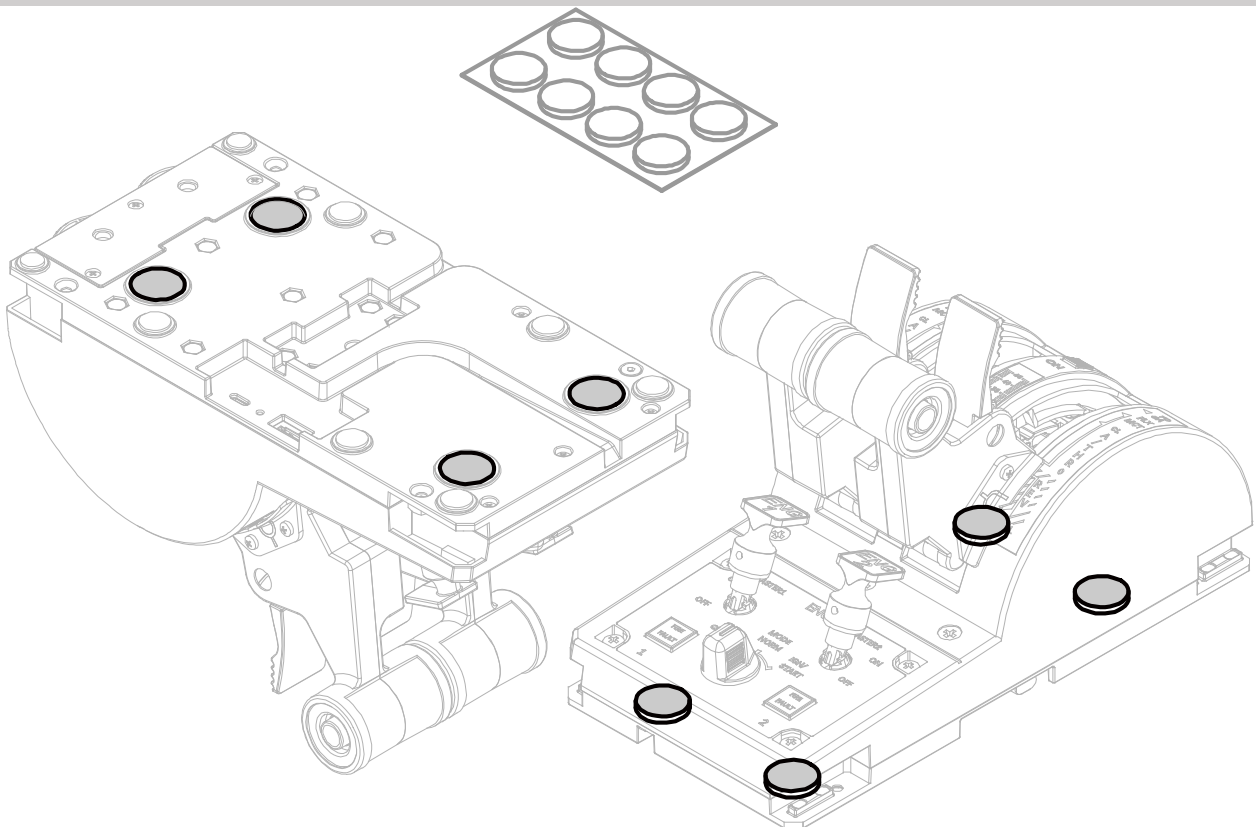
4.1 Use by Placing Directly



- Supported by eight anti-slip pads at the bottom to use

Note: When operating with increased resistance, the product may lift up. In such cases, a fixture is required.

4.2 Adhesive Mounting



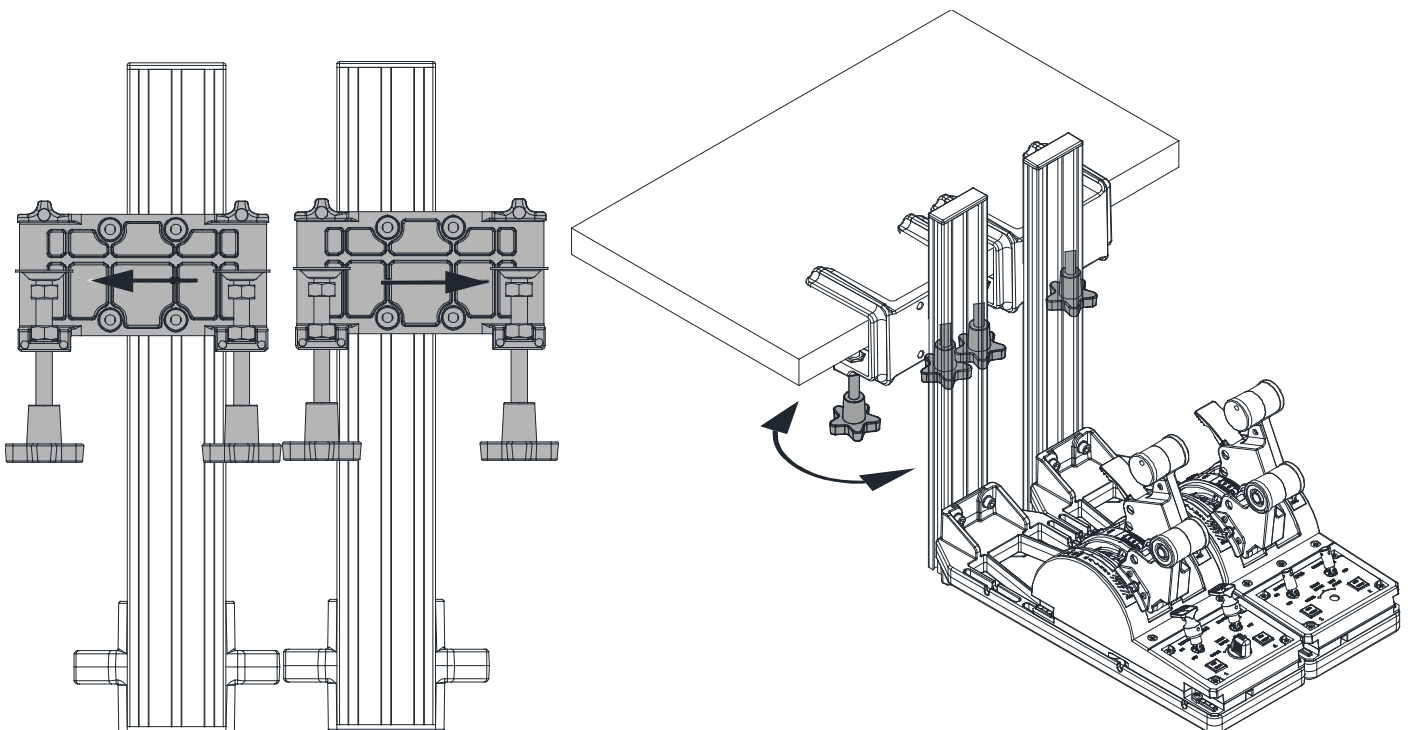
- Turn the product over, remove the adhesive (2#), attach it to the position shown and press
- After confirming the fit, remove the protective film, place the product on the table and press it to secure.

Note: Press with full force for more than 10 seconds and let it stand for 30 minutes to ensure the best effect; Only suitable for one-time application to clean surfaces. Do not apply to surfaces with wax, oil, water, dust, dirt or roughness to avoid falling off due to poor adhesion. The ideal sticking temperature is 10 ° C to 40 ° C; If you want to move it, slowly pull it off or rotate the product parallel to the desktop.

4.3 Mount Assembling need purchase separately

4.3.1 For bracket mounting, refer to MT.N.N.5.1 manual.

4.3.2 Parallel mounting



- After connecting the two products to the mounts respectively, remove them from the clamps and install them by translating 20mm, which is the distance of one slot (the left

mount clamp is translated to the left, and the right mount clamp is translated to the right);

Secure the clamps to the table initially. After confirming that the two mounts are close together, tighten the four plum blossom screws to secure

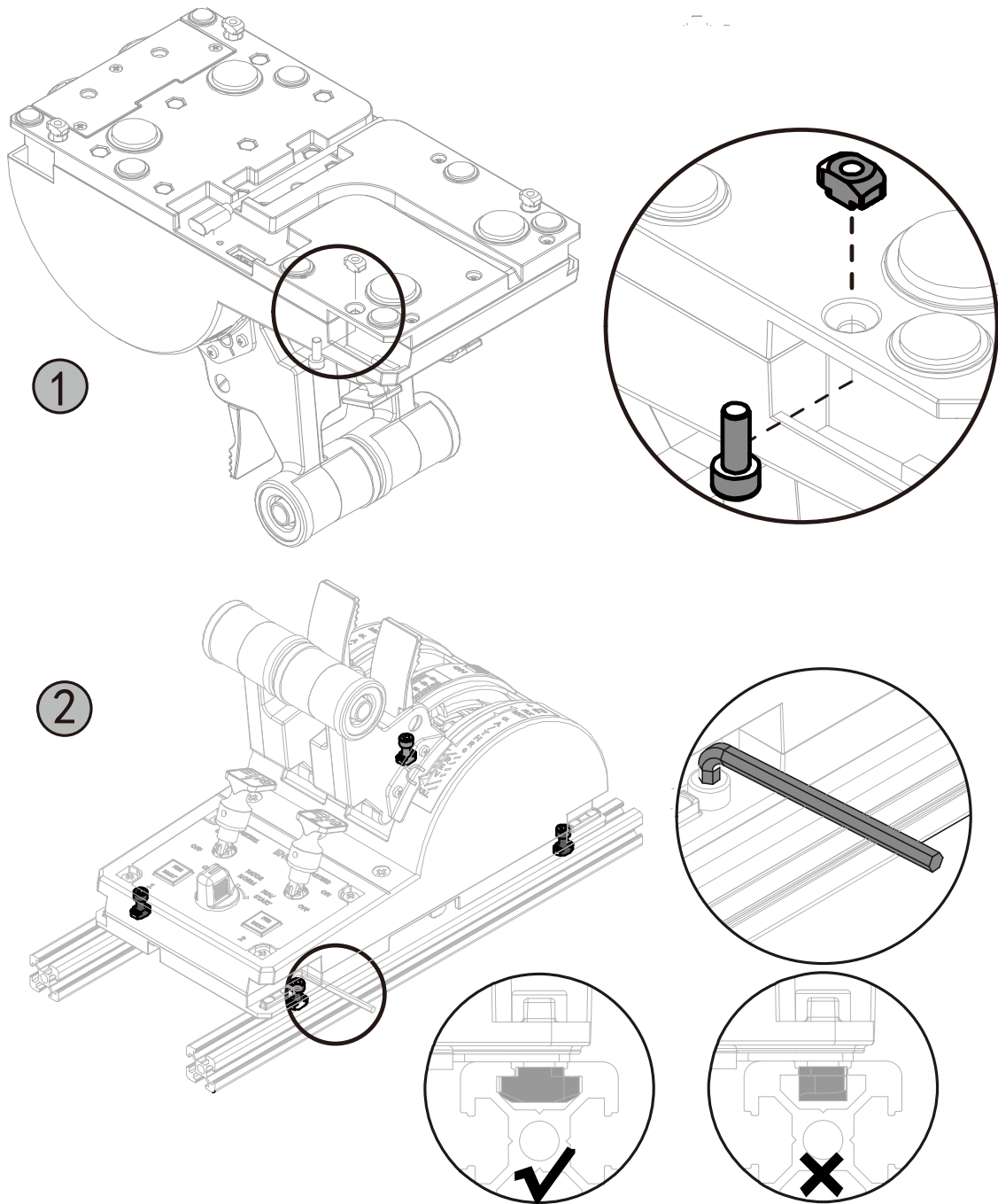
Note: Only two screws are fastened to the profile after the clamp is reinstalled

4.4 Profile Assembling

Profiles and related accessories need to be prepared by yourself

- Bring your own accessories specification sheet (recommended)

Name	Specifications	Quantity
Profile	Euro 2020EU	2
T-nut	Type 20 -M4	4
Hex socket cylindrical head screws	M4*12	4



Flip the product. Insert the M4*12 screw diagonally through the hole and screw in the M4 nut (2-3 turns will do);

- Insert the four T-nuts vertically along the direction of the profile track, and use an Allen wrench (3#) to tighten the screws. Make sure the T-nuts are laterally clamped in the guide rail.

Note: The T-nuts and screws should be used in conjunction with the profile. The profile shown in the illustration is Euro 2020EU.

5 Maintenance and Upkeep

5.1 Firmware Upgrade

- Firmware Upgrade via SimAppPro

Before upgrading, make sure the product wiring harness is securely connected and follow the instructions on the SimAppPro interface.

If you encounter problems during the upgrade, try to restart SimAppPro and reconnect the device USB. (Note: Except for the USB interface, other interfaces do not support hot plugging. If you need to connect other interfaces such as PS2, SATA, or aviation cable interface, please unplug the USB cable before operation)

If you still can't upgrade, please contact customer service for technical support.

5.2 Cleaning and Maintenance

- This product is designed to prevent sand, dust, dirt that accidentally lands on it from entering the product, but it cannot completely prevent dirt, dust, water or salt from entering the product. Try not to let dirt, dust, water or salt fall on the product and keep it clean.
- It is recommended to clean the product after use. Leaving dirt, dust, water or salt on the product may cause it to malfunction.
- Do not place this product near objects with strong magnetic fields, such as magnets or electric motors. Strong magnetic fields may cause abnormal product data.

- Do not place this product in a place that is too hot, such as in a car exposed to direct sunlight. High temperatures may cause the product to malfunction.
- There are precise electronic circuits inside the product. Do not disassemble the product yourself.
- Do not touch the electronic contacts of the product with your fingers. To prevent corrosion of the contacts. Corroded contacts may cause product failure.
- If the product is suddenly moved from a cold place into a warm room, it may cause condensation on the product surface and its internal parts. To prevent condensation, first place the product in a sealed plastic bag and then wait until its temperature gradually rises before removing it from the bag.
- If condensation occurs on the product, to avoid damage, do not use it. Please wait until all the moisture has evaporated before continuing to use it. Even after the product is completely dry, the inside of the product may still be in a low-temperature state.
- Avoid storing the product in places such as chemical laboratories where there are chemicals that cause rust and corrosion.
- Use original factory parts for maintenance and replacement.

5.3 FAQs and After-sales

FAQs

- If there is an anomaly with the use of the product, check that the product firmware and SimAppPro version are up to date and upgrade.
- If the product signal is unstable or shifted during use, try recalibrating within SimAppPro or clearing the game controller data in Windows.

- If the product is unstable or unrecognizable when connected to a computer, try replacing the USB port (it is recommended to use a computer motherboard USB port or a USB port on a three-pin HUB with independent power supply and good grounding) try cleaning the data cable interface with alcohol or replacing the data cable to test if the signal is restored.
- (Note: If you need to connect to other interfaces such as PS2, SATA, or aviation cable, please unplug the USB cable before proceeding.)
- After the product is connected to the computer, please insert the cable harness into the fixed clip, otherwise it may cause damage to the product interface.
- When assembling and connecting the product and its accessories, make sure the fixing screws are properly tightened and there are no loose or over-tightened parts. Otherwise, it may cause abnormal noises during the use of the product.
- When using a HUB to connect products, use a three-pin HUB that has an independent external power supply and is well grounded. Otherwise, it may cause problems with the product signal.

6 Safety Precautions

For safe use of the product, be sure to read these notes.

Please follow these precautions to prevent damage or injury to the product user or others.

- Please keep the product out of reach of children.
- It is extremely dangerous to swallow product components or accompanying items. Seek medical attention immediately if swallowed.

- The moving structural parts of the product are lubricated with grease or damping compounds. Please do not touch them, as accidental ingestion may be harmful to health.
- Use only the power supply specified in the product user manual for use with the product.
- Do not disassemble or modify the product.
- Do not subject the product to strong impacts or vibrations.
- Do not touch any internal parts that are exposed.
- Stop using the product if it shows any abnormality such as smoking or emitting an odd smell.
- Do not use organic solvents such as alcohol, gasoline, or paint thinner to clean the product.
- Do not wet the product. Do not insert foreign objects into the product or pour liquids into it.
- Do not use the product in an environment where flammable gases may be present, or it may explode or catch fire due to static electricity.
- Do not touch products connected to power sockets during thunderstorms, otherwise it may cause electric shock.

Disclaimer

Please read and understand the contents of the product user manual carefully. Failure to follow the instructions may result in personal injury or damage to the product.

Please make sure that all people using this product are familiar with and understand the product user manual in order to maximize the value of the product.

Personal injury, property loss, product damage, etc. resulting from improper operation by the user or failure to operate in accordance with the user manual shall be borne by the user himself, and the Company shall not be held responsible for this.

When using the product:

The product should be installed, transported, stored, used, maintained and disposed of in accordance with the guidance of the product guide and the requirements of relevant laws and regulations and safety standards, without violating relevant laws and regulations.

Given that the conditions and methods in which users utilize this product are beyond the control of our company, if any of the following situations occur, the consequences shall be borne by the user personally, and our company shall not bear any responsibility for this:

Personal injury, property loss and product damage resulting from improper operation by the user, failure to follow the product user manual or other uncertain factors.

Changes to product specifications and data due to improvements in reliability, function, design or other reasons will result in changes to the contents of the user manual without prior notice.

NO: 20241018-01A-P

WINWING SIM

WINWINGSIM.COM